

GU

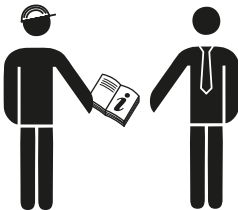
Designed in Germany
C59841030 | 10 | 01.2021
241725



TÜRTECHNIK | DOOR TECHNOLOGY



B-18xxx | B-189xx | B-19xxx | B-197xx |
B-198xx | Secury 19 | B-1990x



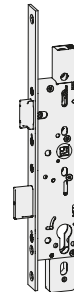
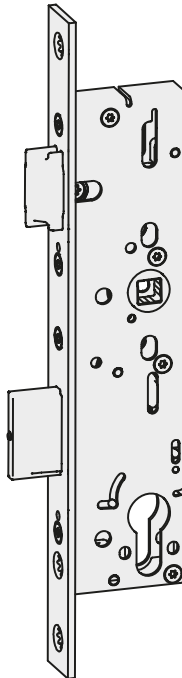
C59646000!

Vorsprung mit System
Securing technology for you

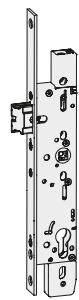
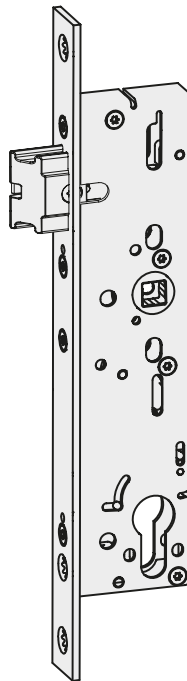




1. B-18xxx

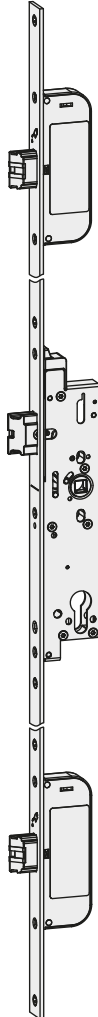


2. B-19xxx





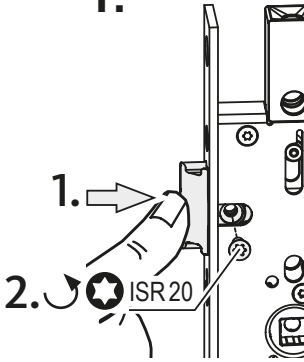
3. Secury 19



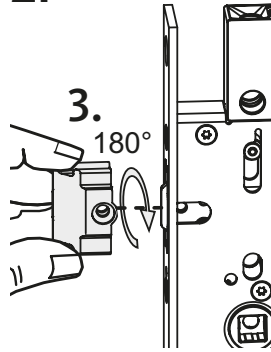
4.



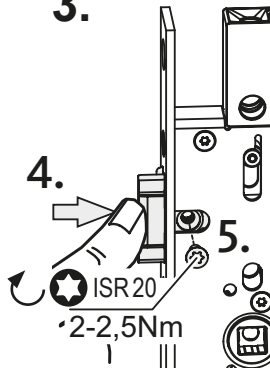
1.



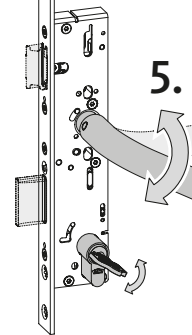
2.



3.

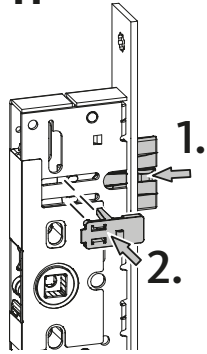


4.

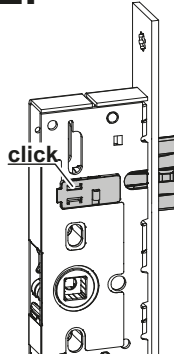




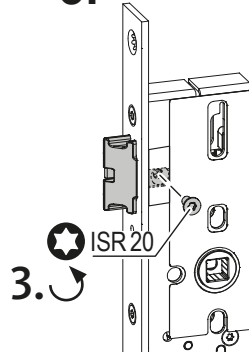
1.



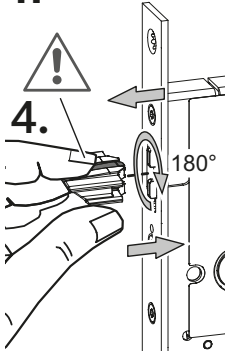
2.



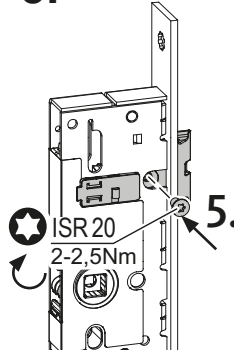
3.



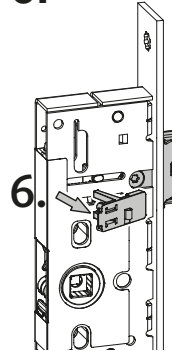
4.



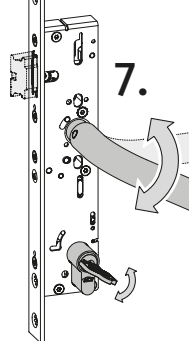
5.



6.

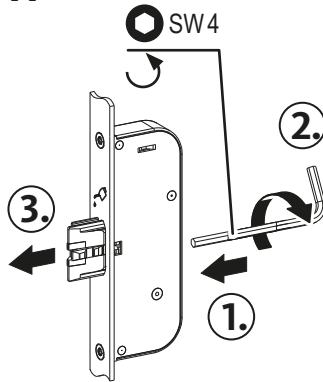


7.

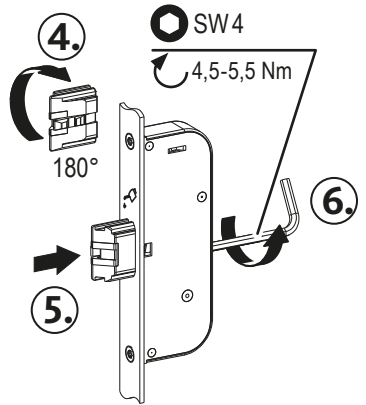




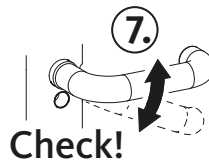
1.



2.

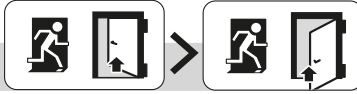


3.

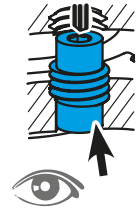
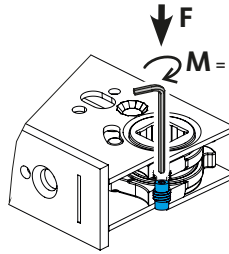
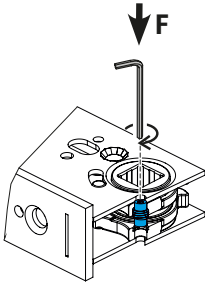
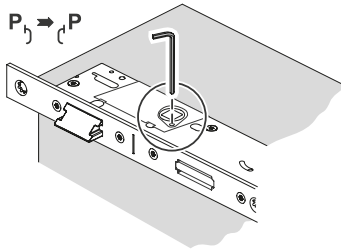




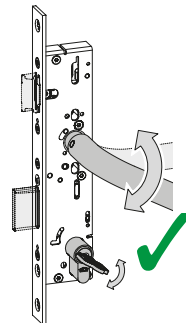
5.



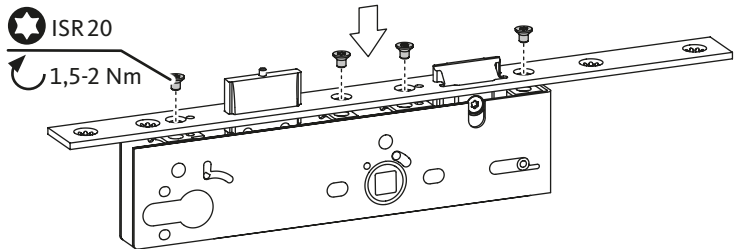
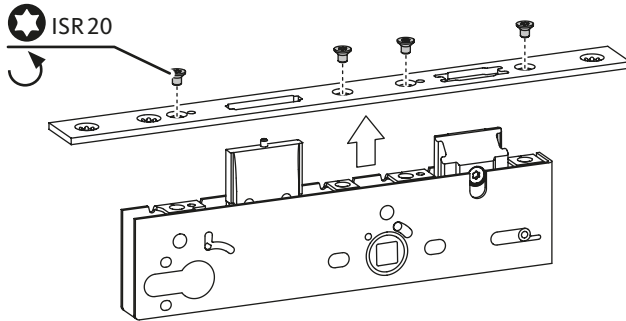
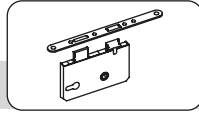
B-90010-02-0-0



EN 179	EN 179
EN 1125	EN 1125



6.

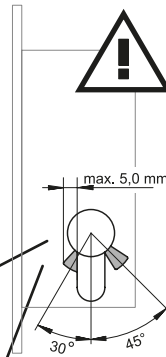
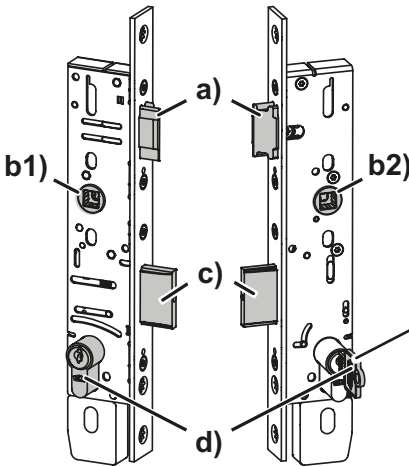




7. B-18xxx | B-19xxx | Secury 19 6-B191x



DIN VDE 0100, DIN VDE 0160, DIN VDE 0632



IP30

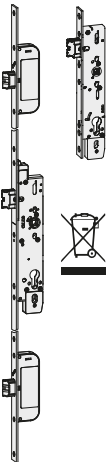
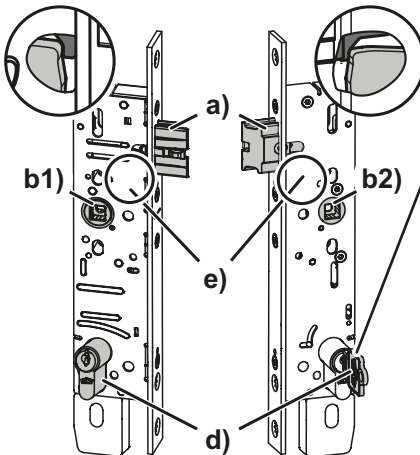
°C +60°C
-20°C

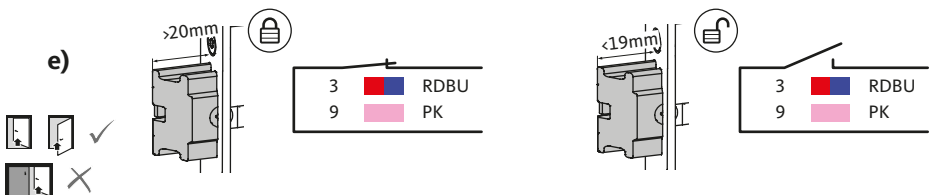
≤95%
40°C

EN III
50131-1

EN III
1670 (96h)

P_{\max} 1W
 I_{\max} 100mA DC
 U_{\max} 30V DC
(9V/100mA;
12V/80mA;
24V/40mA;
30V/30mA)

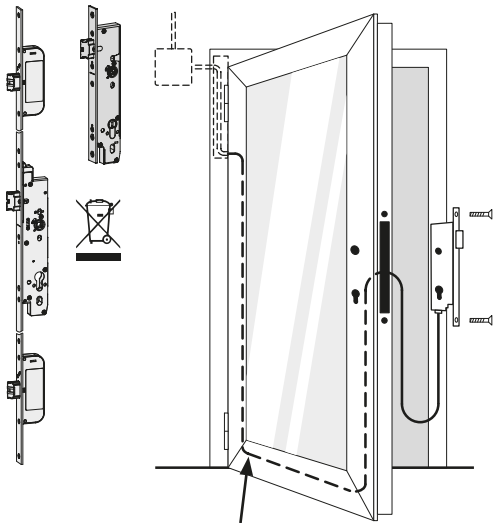




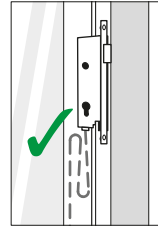
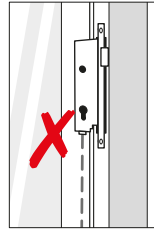
IEC 60757



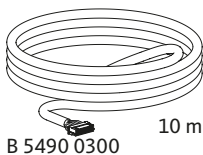
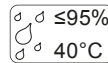
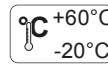
8. B-197xx / B-198xx / Security 19 EK 6-B197x



B 5490 0300

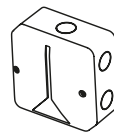


U_{max} 12-24 V DC \pm 15% \approx 100 mVpp
 I_{max} 250 mA
 I_{min} 20 mA
 ED 100%

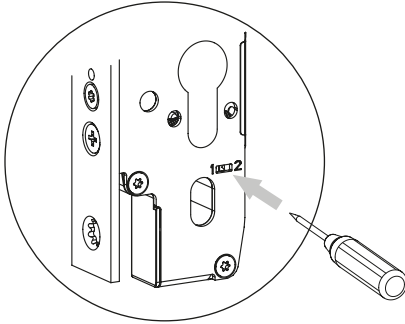



B 5490 0300

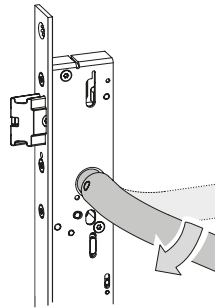

 option

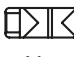


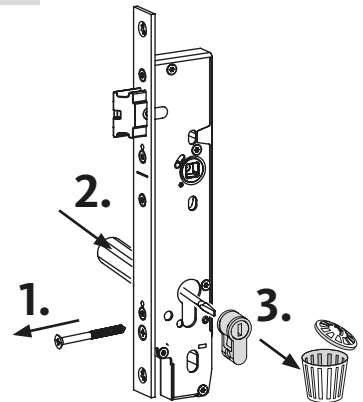
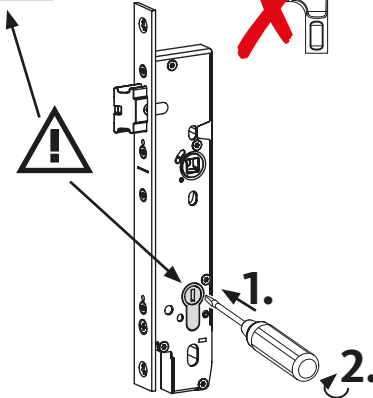
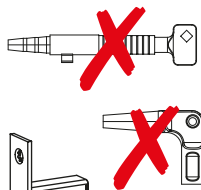
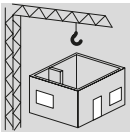
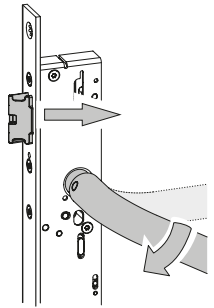
B-54900-03-3-9



1 
 $U_{IN} = 0 V$

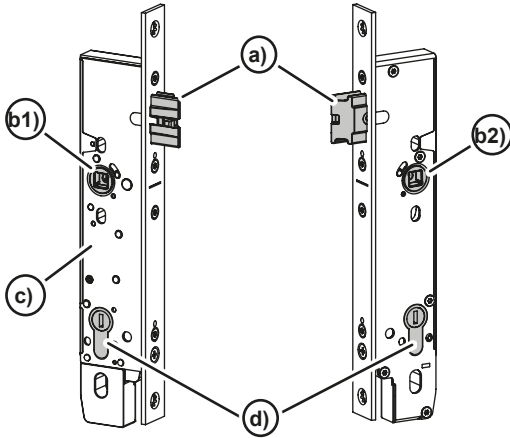
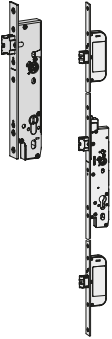




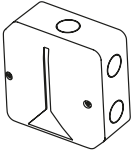
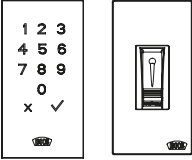
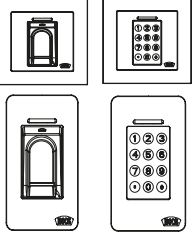


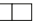




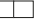

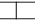


2 
 $U_{IN} = 0 V$

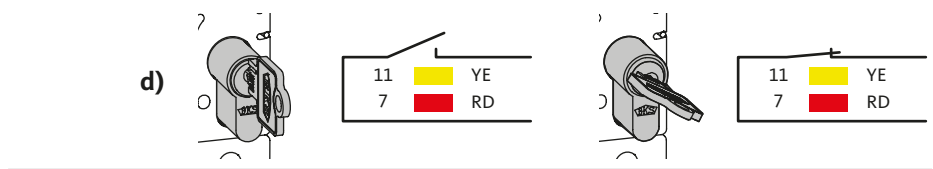
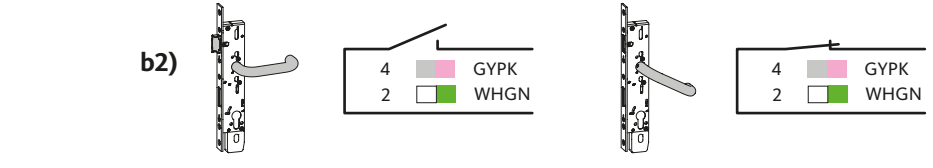
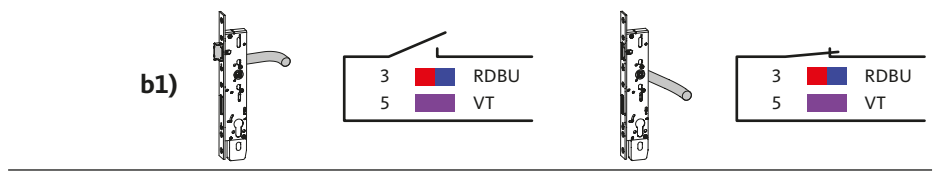
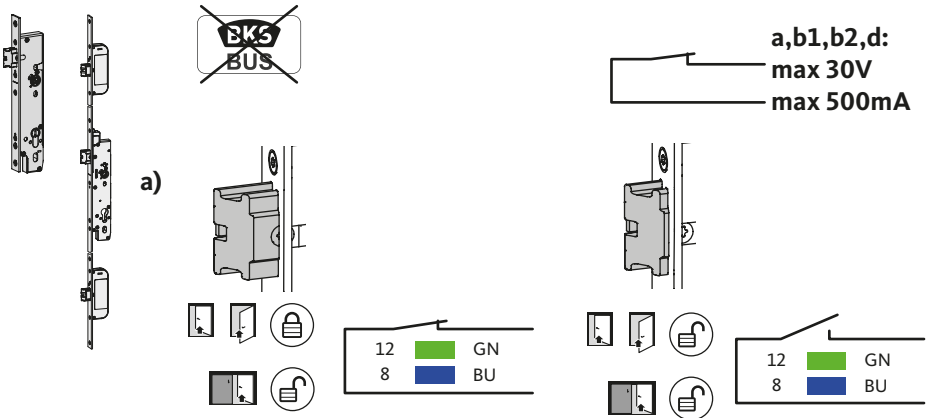


B-18xxx | B-189xx |

B-19xxx | B-197xx | B-198xx | Secury 19 | B-1990x



 option				
BKS BUS	B-1970x B-1971x B-1975x B-1980x B-1981x B-1985x Secury 19: 6-B1970 6-B1971 6-B1975	B-54900-03-3-9	B-55600-10-4-6 B-55600-13-4-6	B-55600-20-1-8 B-55600-20-4-8 B-55600-23-1-8 B-55600-23-4-8 B-55600-25-4-8
RS-485 A		LA		
RS-485 B		LB		
+12...24 V DC		V1		
GND		G1		



+12 - +24 V DC
GND

13 BN
14 WH

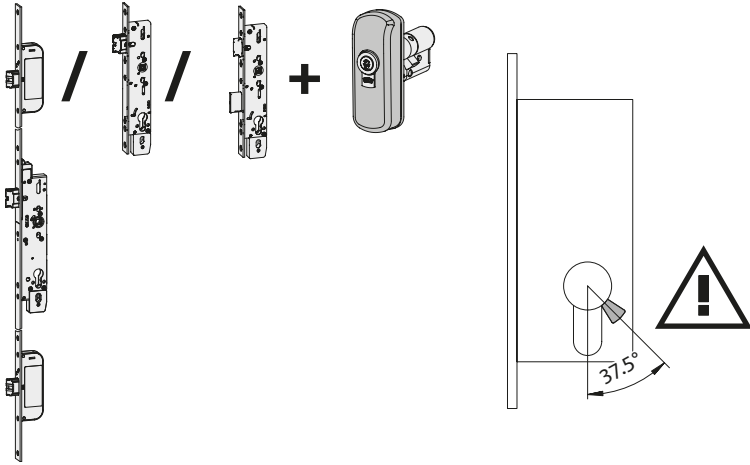
IEC 60757

B-18xxx | B-189xx |

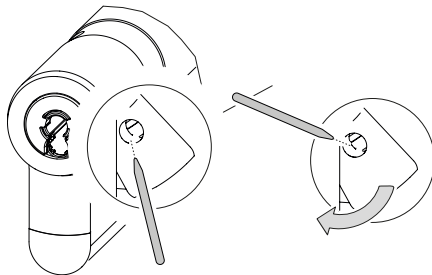
B-19xxx | B-197xx | B-198xx | Secury 19 | B-1990x



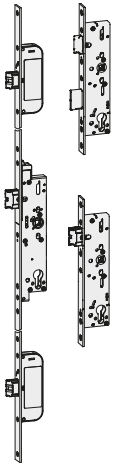
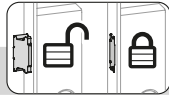
9. B-18/19xx SÜ/ B-197xx/ B-198xx/ SECURITY 19 EK 6-B197x



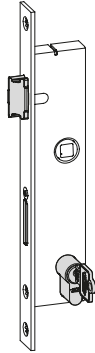
~Ø1,4 x 60mm



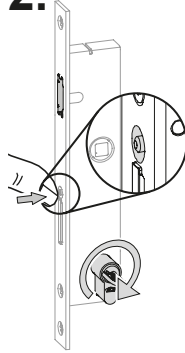
10.



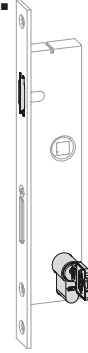
1.



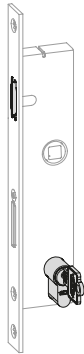
2.



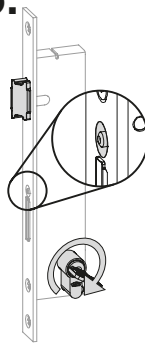
3.



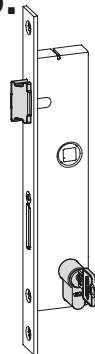
4.



5.



6.

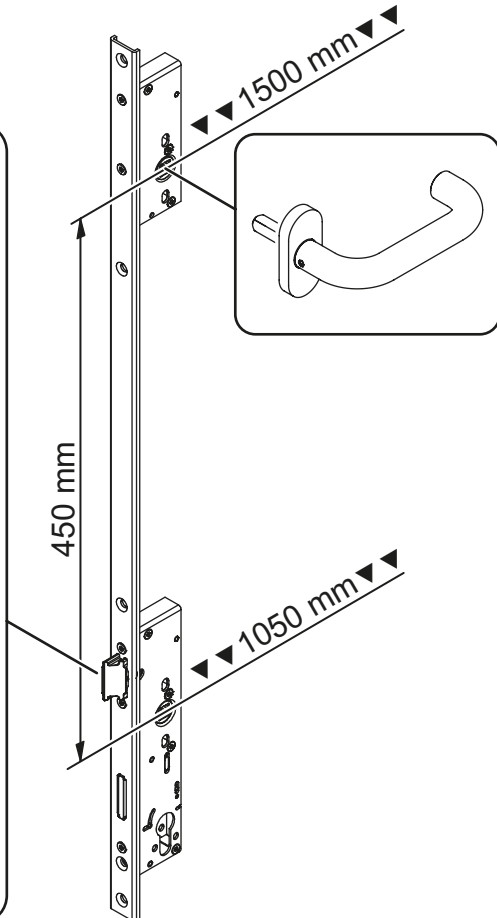
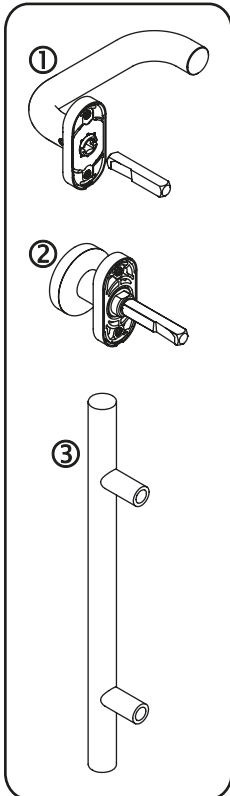
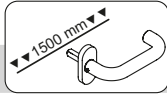


B-18xxx | B-189xx |

B-19xxx | B-197xx | B-198xx | Secury 19 | B-1990x



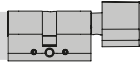
11.



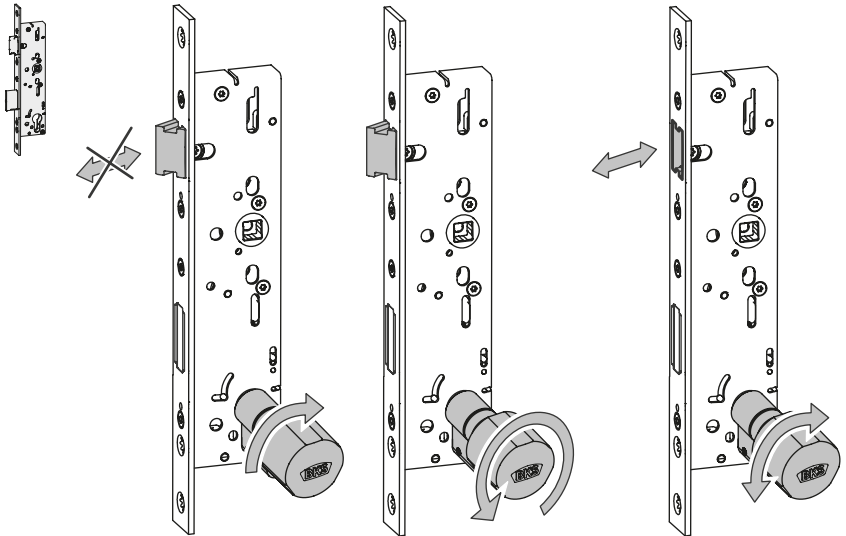
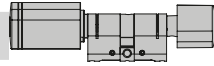
12.



+

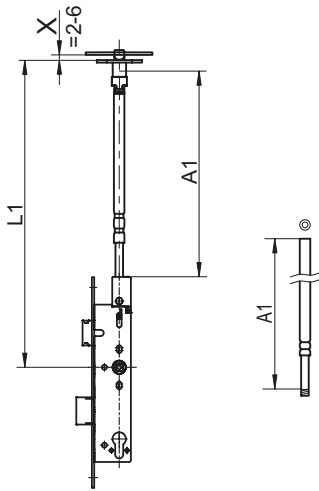


/

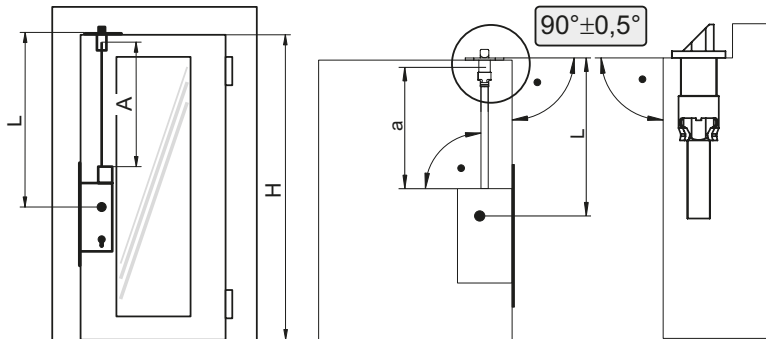
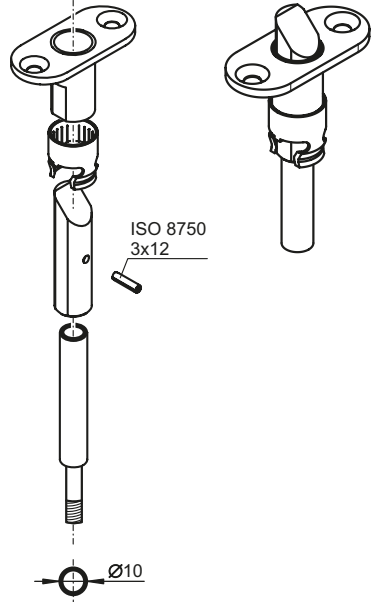


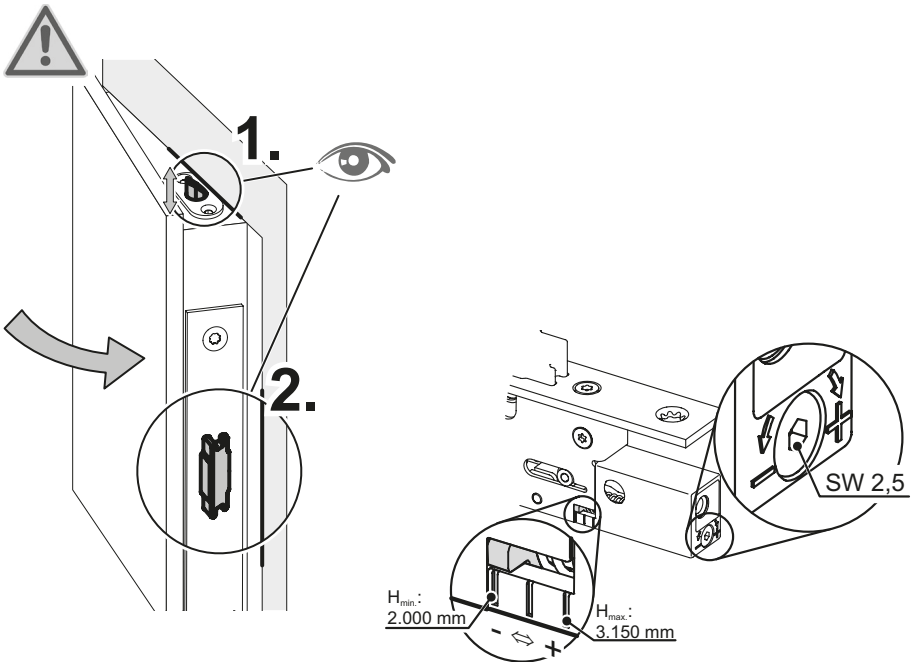
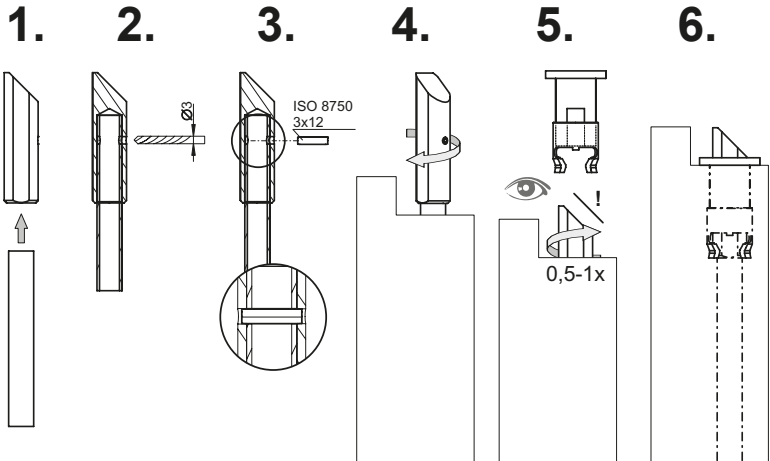


13. B-18xxx/B-19xxx + B 1795



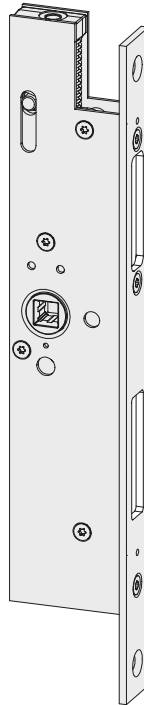
$$A1 = L1 - 124,5 + X \text{ [mm]}$$

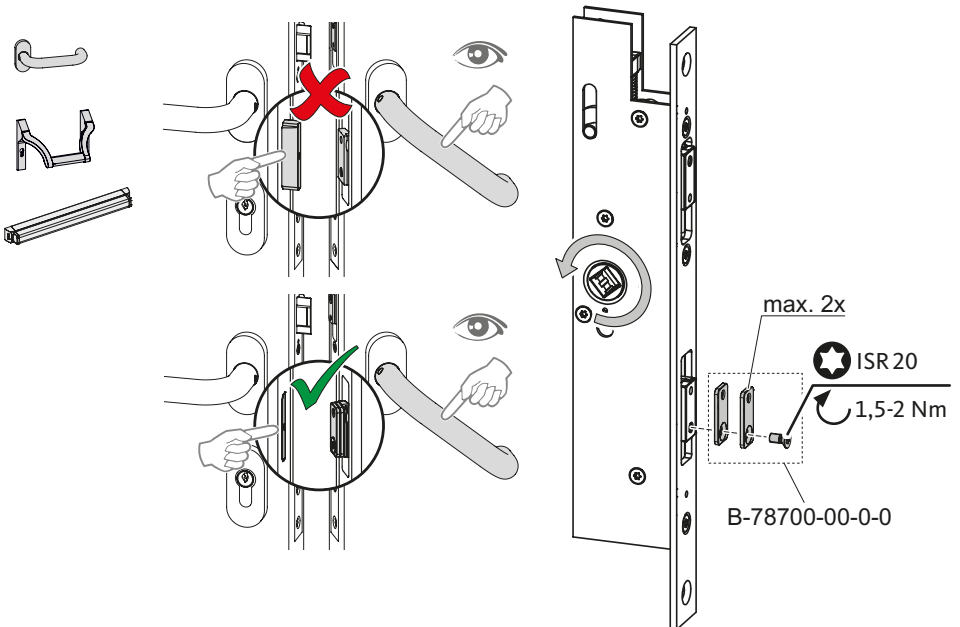
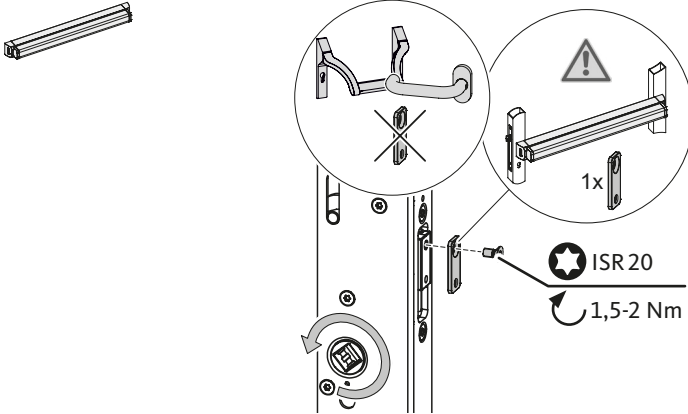






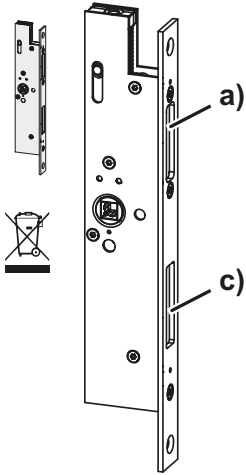
14. B-189xx / B-1990x





B-18xxx | B-189xx |

B-19xxx | B-197xx | B-198xx | Secury 19 | B-1990x



IP30

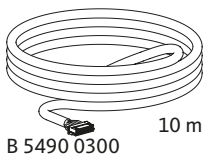
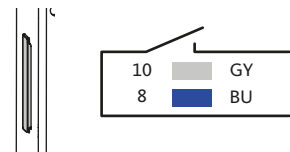
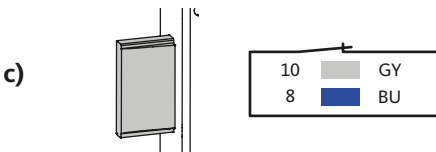
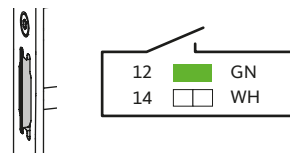
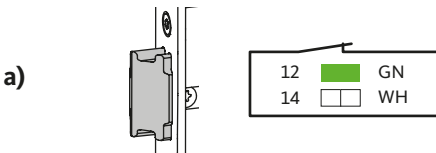
+60°C
-20°C

≤95%
40°C

EN 50131-1 III

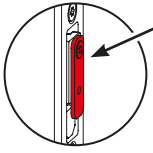
EN 1670 III (96h)

P_{max} 1W
 I_{max} 100mA DC
 U_{max} 30V DC
(9V/100mA;
12V/80mA;
24V/40mA;
30V/30mA)



B 5490 0300

10 m



- Die kupferfarbenen Transportsicherungen auf den Auslöseschiebern sollen montiert bleiben, bis die Türanlage an ihrem endgültigen Standort eingebaut ist.
- The copper-coloured transport securing devices on the triggers should remain in place until the door system is installed in its final location.
- Les sécurités de transport cuivrées sur les déclencheurs doivent rester montées jusqu'à ce que le système de porte soit installé à son emplacement définitif.
- Las protecciones para transporte de color cobre en los disparadores deben permanecer montadas hasta que la instalación de puerta se haya montado en su ubicación definitiva.
- Elementele de siguranță la transport de culoarea cuprului trebuie să rămână montate pe declanșatoare până când sistemul ușii este montat la locul final.

B 9032 0000

GN WH

B 9032 0001

GN WH

IP30

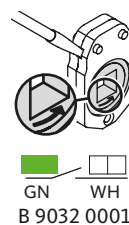
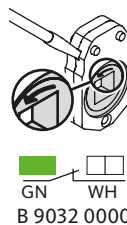
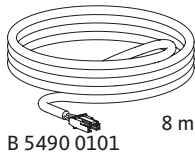
EN 50131-1 III

EN 1670 III (96h)

°C +60°C
-20°C

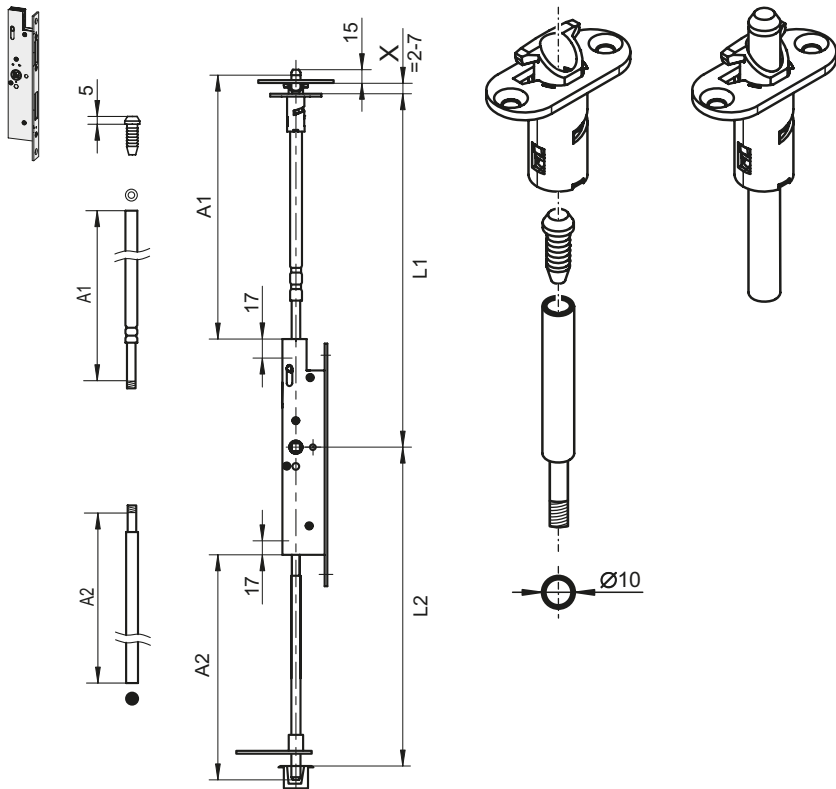
≤95%
40°C

P_{max} 1W
I_{max} 100mA DC
U_{max} 30V DC
(9V/100mA;
12V/80mA;
24V/40mA;
30V/30mA)



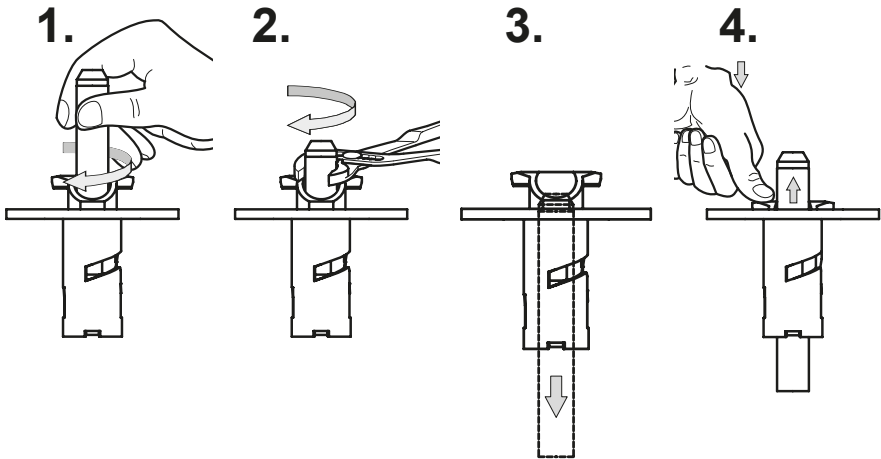
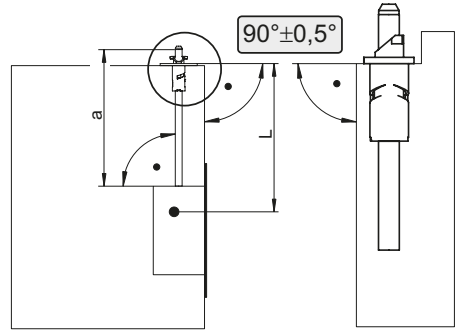
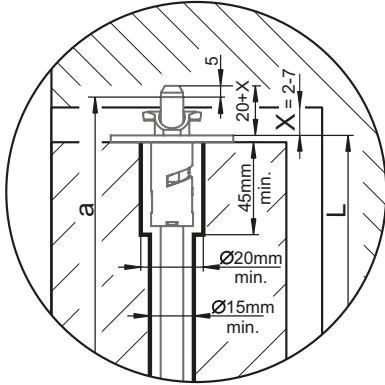


15. B-189xx/B-1990x + B 1895



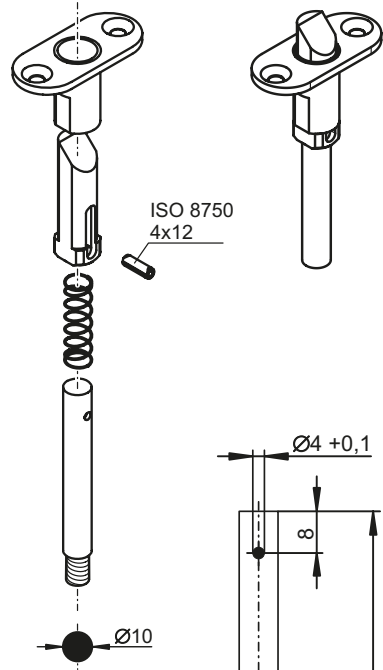
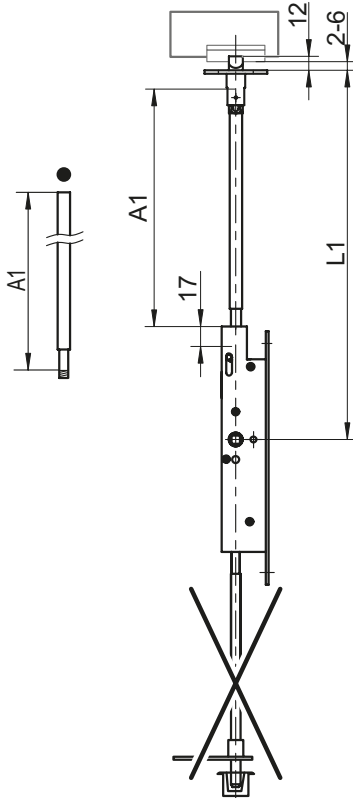
$$A1 = L1 - 110 + X \text{ [mm]}$$

$$A2 = L2 - 109 \text{ [mm]}$$

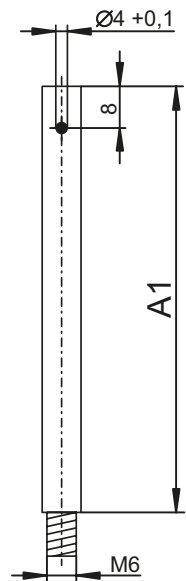


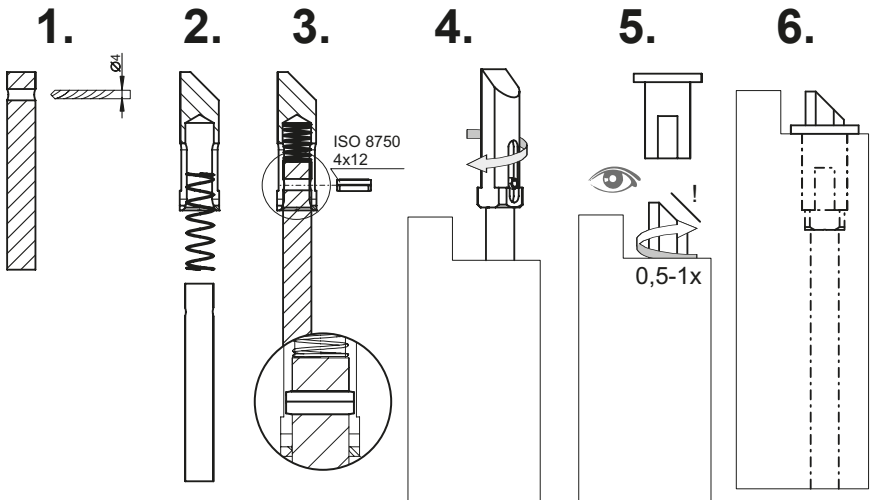
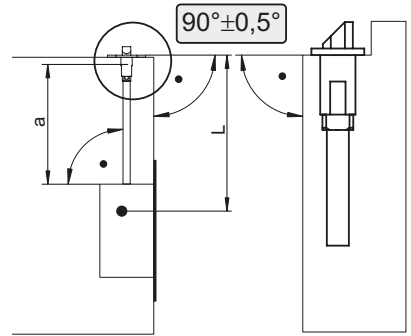
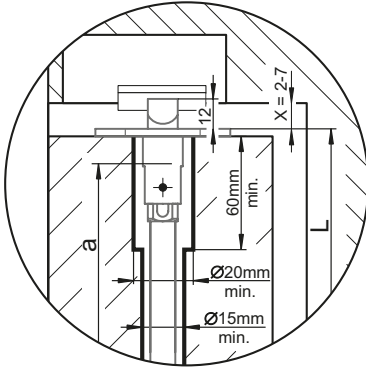


16. B-189xx/B-1990x + B 1796



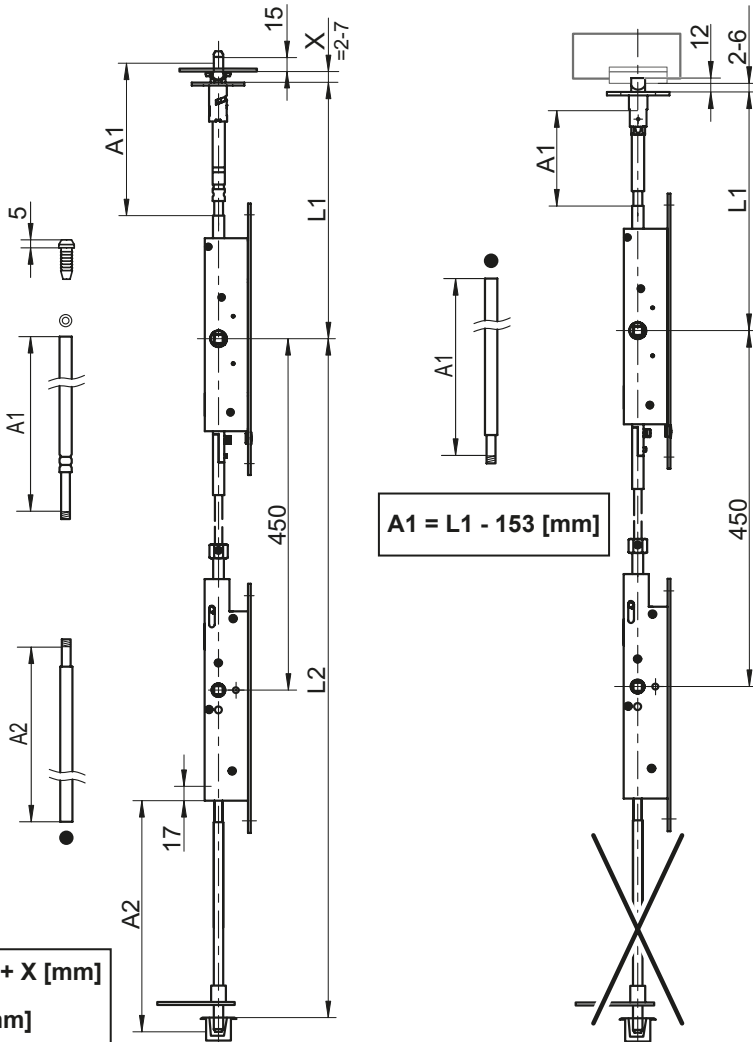
$A1 = L1 - 140$ [mm]
 $A2 = L2 - 109$ [mm]





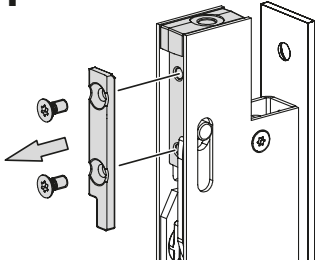


17. B 1798

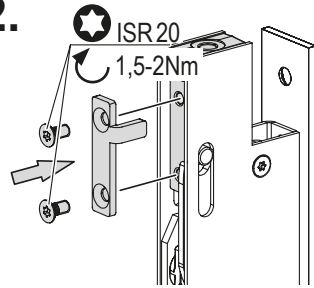


$A1 = L1 - 123,5 + X \text{ [mm]}$
 $A2 = L2 - 559 \text{ [mm]}$

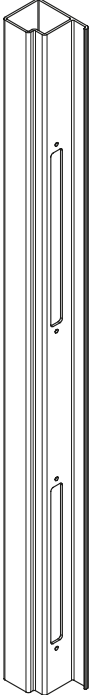
1.



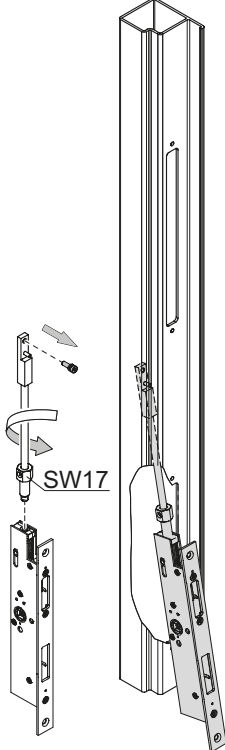
2.



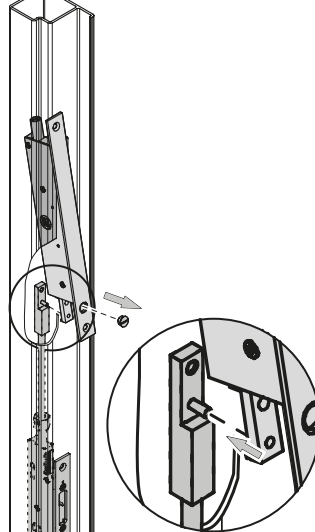
3.



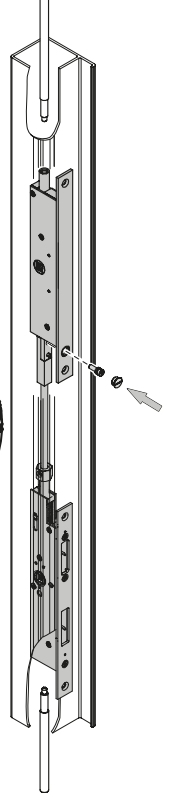
4.



5.

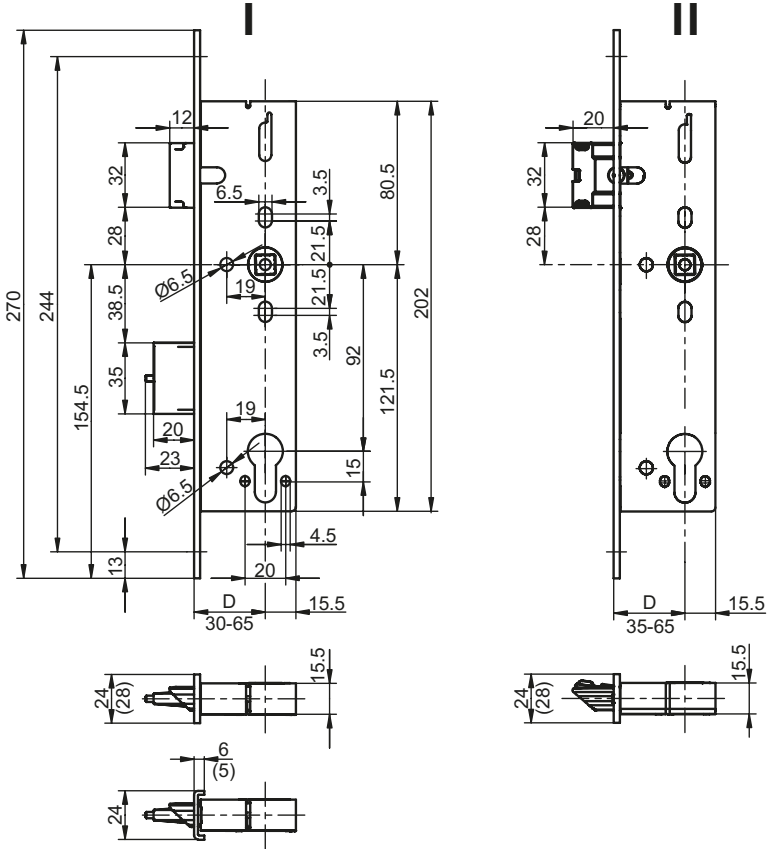
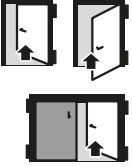


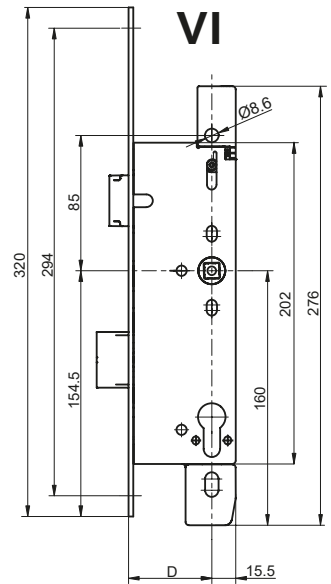
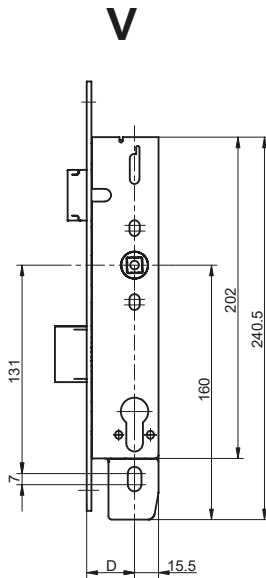
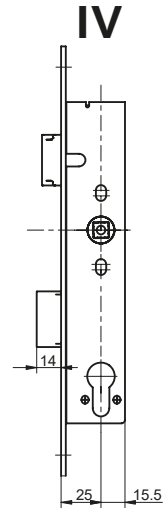
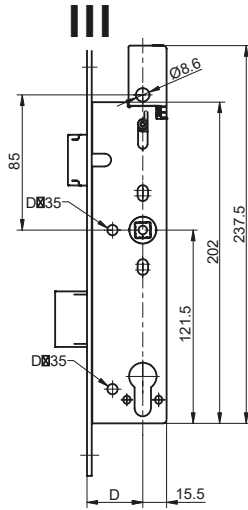
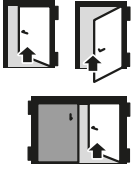
6.



B-18xxx | B-189xx |

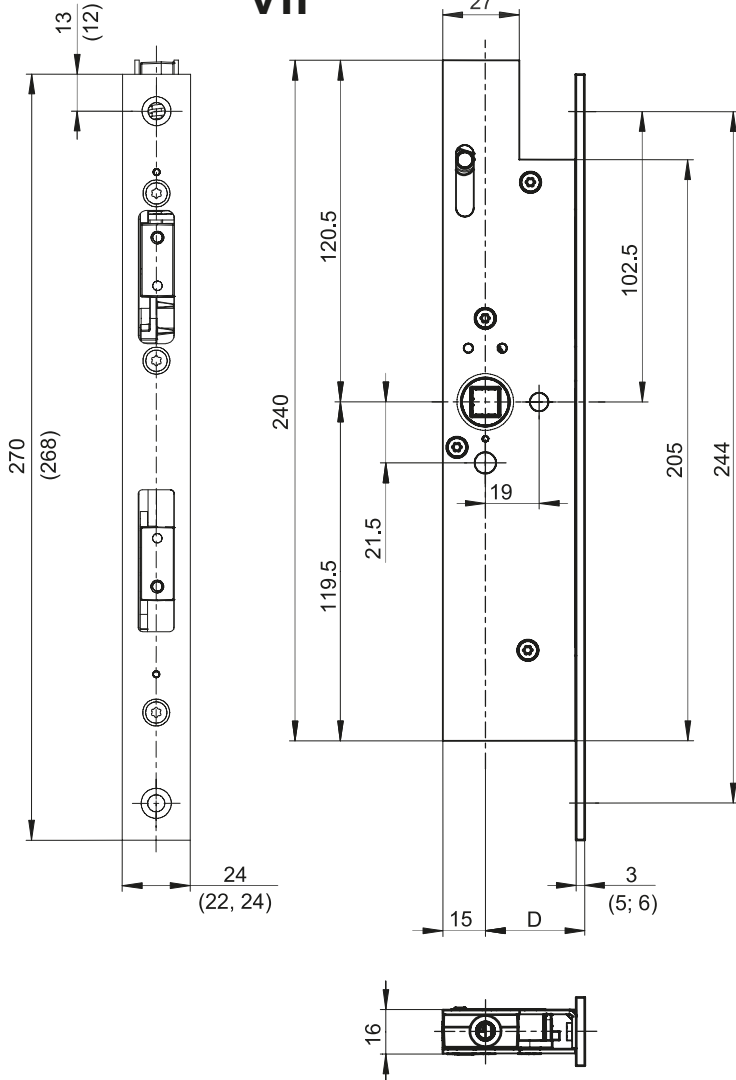
B-19xxx | B-197xx | B-198xx | Secury 19 | B-1990x



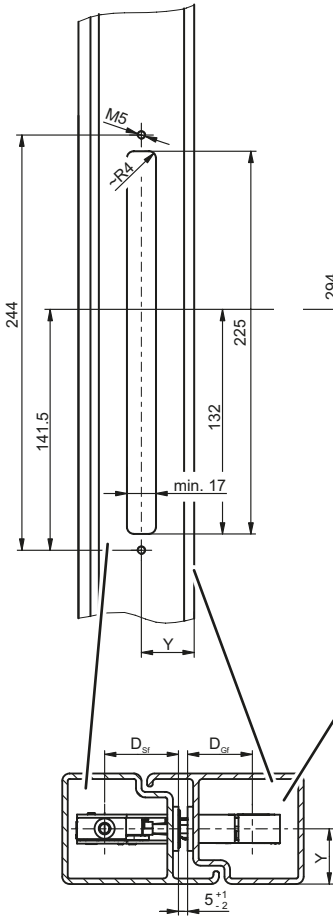




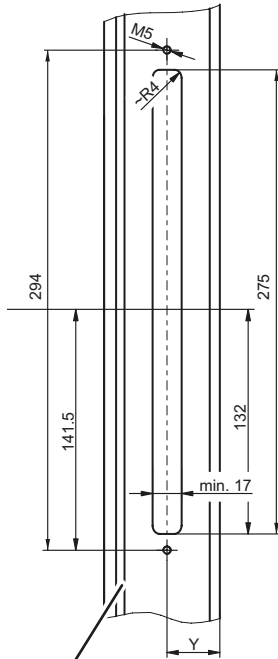
VII



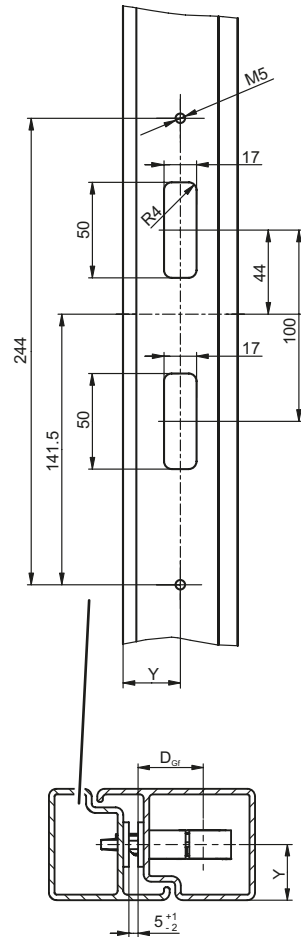
I - VII



VI



I - VI

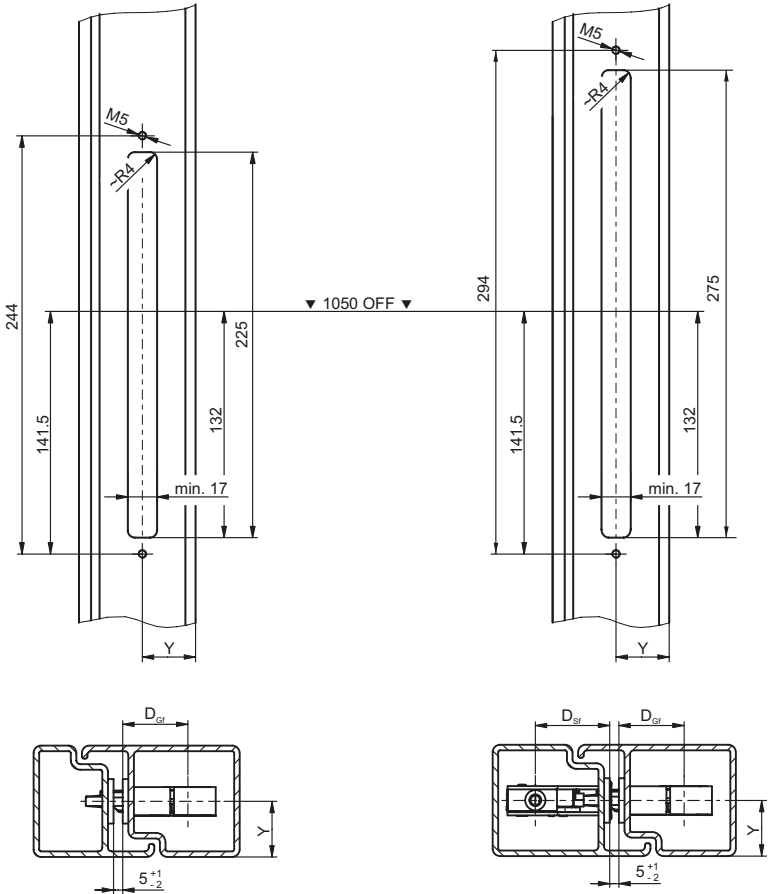


B-18xxx | B-189xx |

B-19xxx | B-197xx | B-198xx | Secury 19 | B-1990x



VII

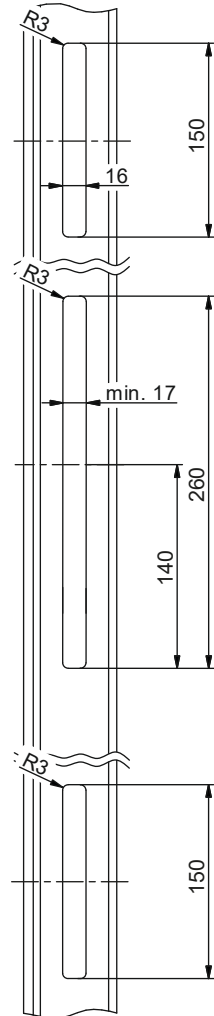
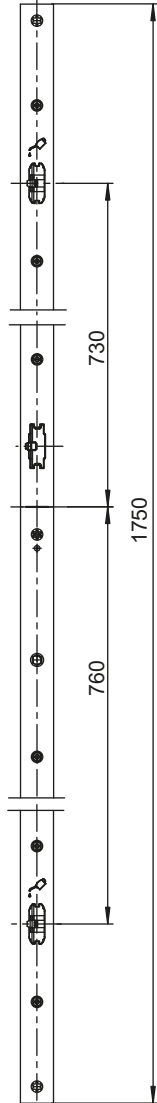
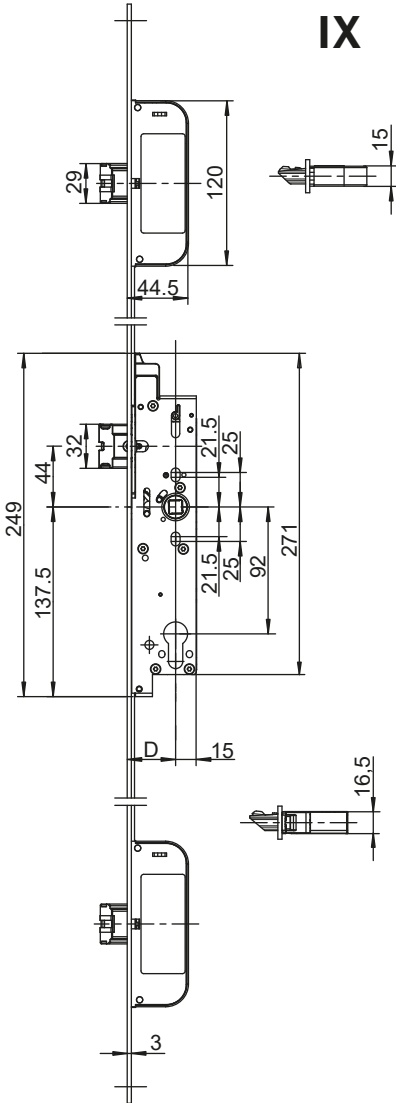


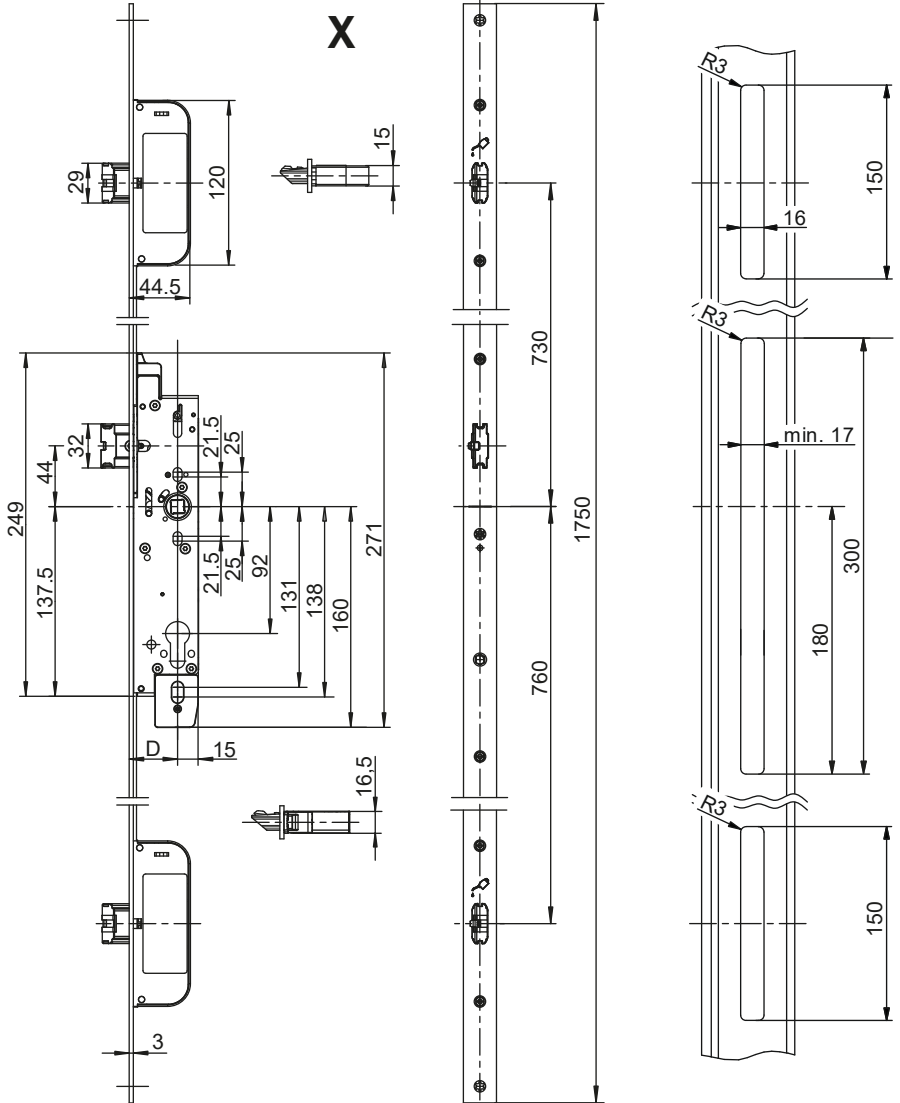
B-18xxx | B-189xx |

B-19xxx | B-197xx | B-198xx | Secury 19 | B-1990x



IX







Herausgeber | Editor:

BKS GmbH

Heidestr. 71

D-42549 Velbert

Tel. +49(0)2051 2 01-0

Fax +49(0)2051 2 01-97 33

www.g-u.com

Fehler, Irrtümer und technische Änderungen vorbehalten.
Errors and omissions reserved. Subject to technical modifications.
Sous réserve d'erreurs et de modifications techniques.
Reservado el derecho a realizar modificaciones técnicas. Salvo error u omisión.